

FREE
Please Take One

WINTER 2022/2023

CENTURY 21[®]

LeMac Realty



www.Century21LeMac.com

AREA INFORMATION



LeMac Realty was founded in the early 1970's by two partners, Ronald Lewis and Ray McDaniel, hence the name "LeMac". In 1985 the transition was made to become affiliated with CENTURY 21®. Now begins "Our Story".....I (Jewel) was hired as secretary in 1989 and received my real estate license a year later. After obtaining my broker's license in 1995, I resigned my secretarial position, went into sales full time, and began a successful career in real estate. An opportunity to purchase the company became available and on October 1, 2001, my husband (Mickey) and I became the proud owners of CENTURY 21 LeMac Realty.

Our venture started with three full time sales associates, including myself, and three part time agents. New agents were added and our leased building quickly began to bulge at the seams. Three years later a lot became available just two doors down and construction soon began on a new two story building. We moved in on Valentine's Day 2005 and continued growing our business. A year later we opened a branch office next to Wal-mart to better serve our clients and offer them the convenience of two locations.

I am proud to say that over the years we have grown to a force of over 50 agents, six support staff members, and have consistently been ranked one of the top real estate companies in the Mountain Home/Twin Lakes Area for production.



Land • River • Lake • Residential • Commercial

View all of our properties at:

Century21Lemac.com

Table of Contents

Residential Properties	22-25
Commercial Properties	26
Land.....	27-30
Display Ads	2-21, 31
Agent Page.....	32

2 LOCATIONS TO SERVE YOU BETTER

40 Plaza Way, Ste 180
 Mountain Home, AR 72653
TOLL FREE: 800-238-1341
LOCAL: 870-492-7653

1024 Hwy 62B East
 Mountain Home, AR 72653
TOLL FREE: 866-377-7220
LOCAL: 870-425-6356



COME VISIT US!

Welcome to the beautiful, quiet, and wondrous Mountain Home, Arkansas located in the Ozark Mountains! As you may have noticed, Mountain Home is one of the best retirement and vacation spots in the USA and Century 21 LeMac is your premier location for Mountain Home Arkansas real estate.

Here in Mountain Home, we have 3 wonderful rivers, 2 lakes, and breathtaking mountain views that make this place one of the leading relocation and retirement locations in America. From May to September, Bull Shoals Lake and Lake Norfork are perfect for water skiing, boating, floating around on a raft in the many swimming areas, and relaxing on the lake shore. There are several camp grounds, hiking trails, and public parks along the lakes and rivers in our area. Between the 2 lakes and 3 rivers, fishing year-round is bountiful and easily accessible. The area lakes attract anglers locally and from all over the country to catch stripers, walleye, bass, lake trout, and crappie. National fishing tournament circuits such as B.A.S.S. have found Bull Shoals Lake to be a regular stop on their tournament trail. Also, there are a considerable amount of local cash tournaments on both Bull Shoals Lake and Lake Norfork at least monthly throughout every year. Don't forget our local rivers! The North Fork River, White River and Buffalo National River are exceptional for tubing, canoeing and fishing for rainbow trout, cutthroat trout, and brown trout; we are the Trout Capital of the world. Have we mentioned hunting? Our area offers a variety of hunting wild game: whitetail deer, wild turkey, quail, pheasant, duck, squirrel, dove, and rabbit to name a few.

Although our area has been known as a tourist attraction for vacationers, don't underestimate the possibility of relocating in real estate in Mountain Home, AR. Our residents reap brilliant benefits such as owning a home for the same cost as renting, eating at all of our flavorful independently owned restaurants, and shopping in town and in our surrounding areas such as Branson, MO (outlets) and Springfield, MO (malls). The Mountain Home area has 2 amazing local golf courses: Big Creek Golf Course and Twin Lakes Golf Course. It's no surprise that the Mountain Home area consistently ranks in the top 100 of retirement communities in the United States.



CENTURY 21

LeMac Realty

Each Office Independently Owned & Operated
1024 HWY 62 E. MOUNTAIN HOME, AR 72653



WE WORK FOR OUR BUYERS & SELLERS
Specializing in Relocation & Retirement Services

RetireToArkansas.Net

CENTURY 21 TOP TEAM YEAR AFTER YEAR

870-405-0793

HelloZteam@gmail.com

870-405-5407

THE Z-TEAM REALTORS



Bob and Linda Zdora,
Executive Brokers



--	--	--	--	--	--

Did you know that...

**THE ZTEAM REALTORS HAVE BEEN RECOMMENDED
by 325 CUSTOMERS scoring 4.9 out of 5**



"Bob and Linda sold our house within 24 hours! They made our buying and selling transactions easy and efficient. We couldn't have asked for a better experience!"

Aaron and Lara M.

Read them all at: <https://www.realsatisfied.com/Linda-Zdora>

CENTURY 21

LeMac Realty

Each Office Independently Owned & Operated
1024 HWY 62 E. MOUNTAIN HOME, AR 72553



WE WORK FOR OUR BUYERS & SELLERS
Specializing in Relocation & Retirement Services

RetireToArkansas.Net

CENTURY 21 TOP TEAM YEAR AFTER YEAR

870-405-0793

HelloZteam@gmail.com

870-405-5407

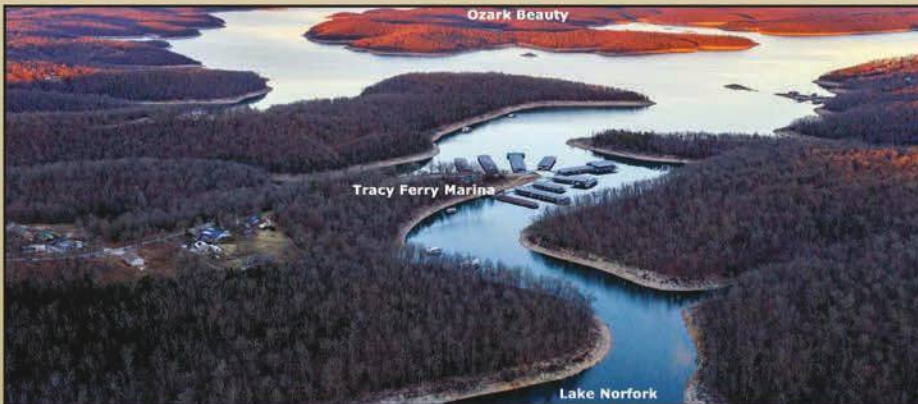
THE Z-TEAM REALTORS



Bob and Linda Zdora,
Executive Brokers



Historic Property in Calico \$299,500.00 In the Ozark Mountains, near White River, in Calico Rock, Arkansas. Calico Rock was settled in 1820 In 1924 the brick church was built. Building also has served as a music hall and is registered with the Arkansas Historic Preservation Program. Located on Hwy 5 South, only 1/2 mile from the White River, near Ozark National Forest, 10 miles from Norfolk Dam and Lake Norfolk. Fish, boat or swim area is rich with water. A large meeting room, original oak hardwood floors, pressed tin ceilings, lighting & stained glass windows. Two office spaces in the back of the building, both have bathrooms and outside exits. Basement has a former kitchen, large open room & 3 offices/storage rooms with 2 exits to the outside. Handicap ramp and off-street parking, bring your business ideas for vacation rental or your own personal retreat could be a residential home. Call Reese Tubbs 870-373-1163

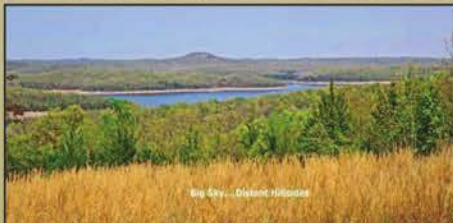


Ozark Beauty

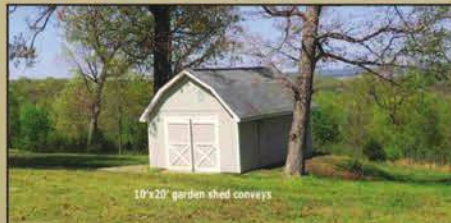
Tracy Ferry Marina

Lake Norfolk

LAKE NORFORK 4.35 AC BUILD YOUR DREAM LAKE HOME!
Builder ready 4.35-acre m/l.
Featuring beautiful Lake Norfolk Views, mature trees and located on a good paved road south of Mountain Home Arkansas. Shopping, Schools & close to 2 established marinas' boating, fishing, swimming on Lake Norfolk Lot 4 has been perked and permitted for 3-bedroom septic system, revalidated recently, new survey, a 10x 20' garden shed. tired of looking at the neighbors, Lake Norfolk views could be yours!
Call 870-405-0793 Linda



Big Sky... Distant Hills



10'x20' garden shed conveyed

CENTURY 21[®] LeMac Realty

**Bob and Linda Zdora
Executive Brokers
Relocation Specialist
The Zteam Realtors**



870-405-0793 870-405-5407
HelloZteam@gmail.com

RetireToArkansas.Net



**Residential, Land, Commercial
River, Lake, Acreage & In town properties**

**We invite you to explore the possibility of making
the Ozarks your new home.**



1024 Hwy. 62B East Mtn. Home

870-405-0703

HelloZteam@gmail.com

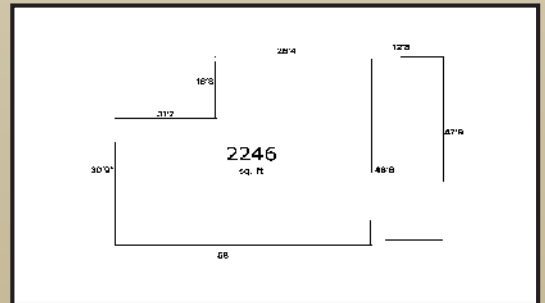
870-405-5407





Bob Zdora, Executive Real Estate Broker, USMC Combat Veteran and Retired Sgt. Of Police CPD, along with Sam McMaster RE Agent and 20 yr. US Army, Retired. Both are members of the Z-TEAM REALTORS, CENTURY 21 LeMac Realty.

Call of text Bob 870-405-0793 Sam 870-736-4663



Wow this building is vacant! Was a neighborhood restaurant. Great location for retail or office space. Bring your business bring your ideas! This is an incredible commercial opportunity, lot parking on recently asphalted for 20+ cars plus street parking. Building is 2246 heated and cooled sq. ft. Flippin Ar. MLS # 121342 \$199,000.00 Call Linda 870-405-0793 to view.

CENTURY 21 WE WORK FOR OUR BUYERS & SELLERS
 Specializing in Relocation & Retirement Services

LeMac Realty Each Office Independently Owned & Operated
1024 HWY 62 E, MOUNTAIN HOME, AR 72653

21 **RetireToArkansas.Net**
 See our New and Improved Web Page

CENTURY 21 TOP TEAM YEAR AFTER YEAR

870-405-0793 **HelloZteam@gmail.com** **870-405-5407**

THE Z-TEAM REALTORS

 Bob and Linda Zdora,
 Executive Brokers



177ACRES, POND, SPRING, HWY FRONTAGE
 IN JORDAN ARKANSAS

Located on Highway 177 in Jordan Arkansas finds 171 acres m/l with an older farmhouse (occupied by renter) detached 2 car garage, city water and electric through property. This property is near Norfolk Lake access. Approx. 90 Ac. in pasture, retention pond, back 80 wooded with marketable timber, seller says spring on the 80 acres. This property lays well and could be one homestead or development potential with Hwy 177 frontage, multiple homesites, resort or a campground. MLS 124979 \$487,350 Call Reese Tubbs 870-373-1163



Coz 2-bedroom, 1-bath home located on Mallard Point Rd. 844 sq. ft. recently updated home. Has a 26' x 29' detached garage with Concrete floor. Located less than 2 miles to Lake Norfolk public access boat launch, camping and lake swimming. This is the perfect home for a first-time buyer or would make a great summer vacation home or retreat! MLS 125283 \$159,000.00 Call Sam McMaster 870-736-4663



Full time living or a great weekend fishing cabin, on 3 acres off highway 177 in Pineville Arkansas. Between Lake Norfolk, the Dam and White River. Set back from the paved hwy, surrounded by large trees on a wooded lot. Well-constructed, open floor plan, vaulted ceilings in the spacious living room, 2 bedrooms, 1 bath, Kitchen is clean, and all the appliances stay. Washer/dryer hook up in closet. All electric with a propane back up heater, new vinyl laminate flooring, ceiling fans and city water. Located south of Mountain Home just past Norfolk dam. MLS# 125127 \$185,000.00 Call Reese Tubbs for showings. 870-373-1163

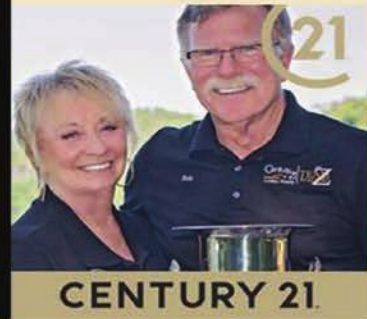


13 Acres m/l on Hwy 5 in Historic Calico Rock available now. Lays level with pasture and some woods. No restrictions and could serve as residential or commercial. This property fronts on paved Highway 5 and 2 other sides with good county-maintained gravel roads. Electric is already on property to old shop building. Metal building 60x100' with steel construction, concrete floor, electric and old wood stove. No well or septic known. Location is 6 miles from White River, 25 miles south of Mtn. Home, shopping and medical nearby and trout fishing in the White River! MLS #124825 \$ 149,500.00 Call Reese Tubbs for more information 870-373-1163

21
CENTURY 21
LeMac Realty 870 405 0793

THE
Z
TEAM
REALTORS

RETIRE TO ARKANSAS.NET



870-405-0793 HelloZteam@gmail.com

View the Beautiful Ozarks from The Z-Team Web page!
Two White River web cams available 24/7
RetireToArkansas.Net

BULL SHOALS AR. MISSOURI MOUNTAIN HOME AR.
COTTER AR.
WHITE RIVER

BOB ZDORA THE VOICE OF REAL ESTATE IN THE OZARKS FOR 15 YEARS. WEEKLY TV AND RADIO SHOWS

Listen to "This week in Real Estate"
with BOB ZDORA

7:16 AM EVERY FRIDAY MORNING



Listen in each Friday for current Local
Real Estate Sales, Listings and Stats

97.1 FM Mountain Talk Radio
Also available On Line.

Bob Zdora, Executive Broker CENTURY 21 LeMac Realty



Watch BOB ZDORA
"This Week in Real Estate"

EVERY FRIDAY MORNING
7:10 AM

- TV KTV K6 Hon TV
- K26-TV K26 GS Harrison TV
- XL7-TV K07 XL Mtn. Home
- Antenna TV -Ch 26
- COX TV Ch843
- Suddenlink Ch 22
- Ritter Ch 21-28
- Velcot Ch 68-75
- NEXT Ch 40

<https://www.facebook.com/XL7TV>

CENTURY 21[®]

LeMac Realty



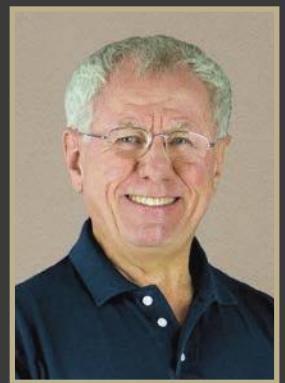
"Committed to Quality Service"
Each Office Independently Owned & Operated



Danny Porter

Cell: (870) 421-7978

dannypor.com



Custom one owner Lake Home in Prestigious Jordan Lake Point subdivision over 3500 sq. ft. 3bd 2.5ba, with a 1200 sq. ft. workshop garage, over 1300 ft. on the Gov. strip with a short gentle walk to water, lots of breathing room on 7.74 acres and a leased boat slip at Jordan Marina, lots more bells & whistles. **\$700,000**
#125301

CENTURY 21®

LeMac Realty



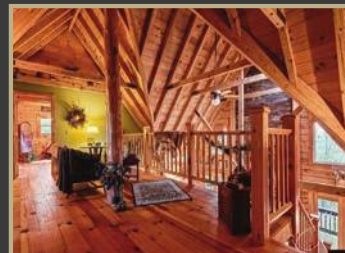
"Committed to Quality Service"
Each Office Independently Owned & Operated



Danny Porter

Cell: (870) 421-7978

dannypor.com



Custom, One Owner, 3 Level Log Home. Rustic design, secluded location on over 12 AC w/government strip frontage. Short distance to Bull Shoals Lake with boat access. 5 bedroom, 3-1/2 bath, 3 car garage on paved county road in area of high-end homes. **\$699,000 #123882**

CENTURY 21[®]

LeMac Realty



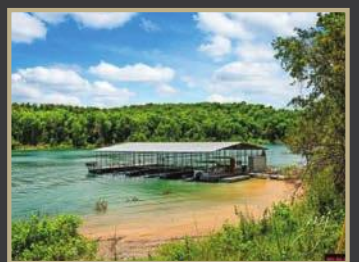
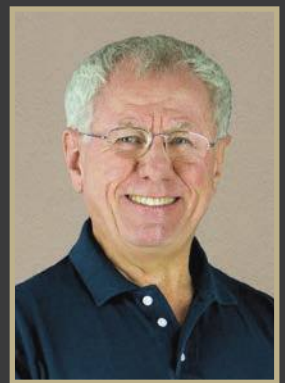
"Committed to Quality Service"
Each Office Independently Owned & Operated



Danny Porter

Cell: (870) 421-7978

dannypor.com



Awesome established 8-unit resort, fantastic owners living quarters, 12 stall boat dock, 479 ft on gov. strip, in-ground pool, same owner for 20 years, ready to pass the gavel. **\$1,750,000 #124594**

CENTURY 21[®]

LeMac Realty



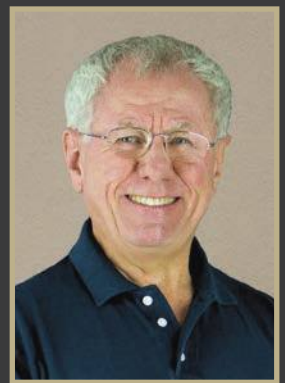
"Committed to Quality Service"
Each Office Independently Owned & Operated



Danny Porter

Cell: (870) 421-7978

dannypor.com



A true show place on a quiet paved county road overlooking the Ozark countryside. 5 bedrooms, 3 baths, cathedral ceilings, includes entertainment center TV & stereo with Klipsch speaker system. All brick built in 2000 with 4466 sq. ft. on 5 beautiful acres, large 24X50 workshop/garage with concrete floor & electric, 36X24 RV port, all move in condition, and less than 5 minutes to Mtn. Home square. **\$724,000 #124085**

CENTURY 21[®]

LeMac Realty



"Committed to Quality Service"
Each Office Independently Owned & Operated



Danny Porter

Cell: (870) 421-7978

dannypor.com



Rare, private setting, 70 acres m/l ranch, in the same family since 1978, near end of county road with long driveway to home, nestled in the woods overlooking level pasture with spring nearby, 3 Bedroom 2 Bath home, open floor plan, metal roof, newer heat pump, mostly perimeter fenced, minutes to Mtn Home Bypass. **\$599,000 #124785**

CENTURY 21[®]

LeMac Realty



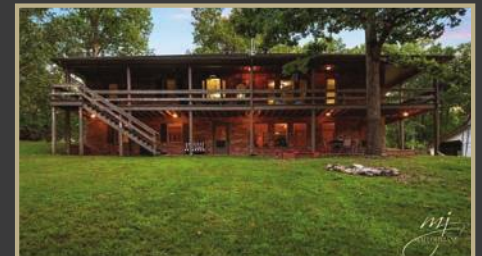
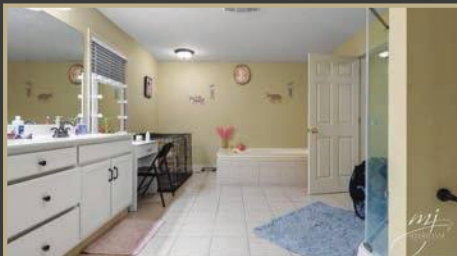
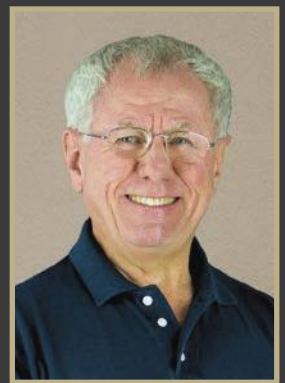
"Committed to Quality Service"
Each Office Independently Owned & Operated



Danny Porter

Cell: (870) 421-7978

dannypor.com



Country living at its best, 3Bd 3Ba all brick, full finished basement, large covered deck overlooking the woods and full time winter view of the lake on the gov. strip 2.12 acres with fenced pasture, 3400+ barn, and a short drive to boat access on Lake Norfolk. **\$449,900 #125057**

CENTURY 21[®]

LeMac Realty



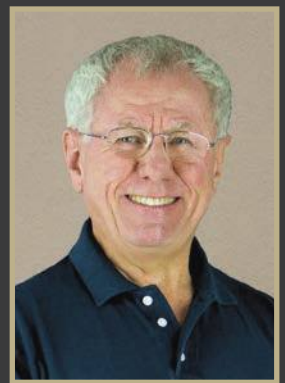
"Committed to Quality Service"
Each Office Independently Owned & Operated



Danny Porter

Cell: (870) 421-7978

dannypor.com



Rare well kept private location at the end of a cul-de-sac adjoining a beautiful countryside view, fenced backyard, 4Bd 3Ba, open floor plan, lots of updates, finished basement with family rm, move in condition at the edge of Mtn Home. **\$324,900 #125029**

CENTURY 21

LeMac Realty



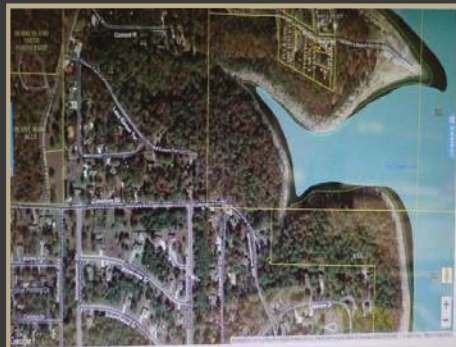
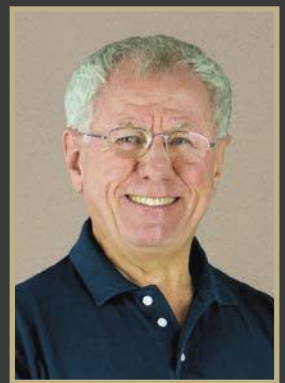
"Committed to Quality Service"
Each Office Independently Owned & Operated



Danny Porter

Cell: (870) 421-7978

dannypor.com



Modern Farmhouse Style, Brand New, 3BR 2 BA, split floor plan, cathedral ceiling in living Rm. Awesome master suite, granite counter tops, 2 car garage, private covered patio, city water & sewer, minutes to Lake access. **\$284,900 #124663**



Each Office Independently Owned & Operated

(870) 425-6356

Toll Free: 866-377-7220

1024 Hwy 62E

Mountain Home, Arkansas 72653



Ron Wallace

Cell: (870) 321-7879

ronwallacerealtor@yahoo.com



Immaculate updated move-in-ready home. The open floorplan, newer laminate flooring throughout granite countertops, newer roof 30 year (2020), newer HVAC (2019), gas log fireplace and newer appliances await you. 2 bedroom, 2 and 1/2 bath, 1874 sq ft. \$224,900 #125147



Well maintained manufactured home with 2 bd, 2 ba a bonus room or 3rd br on 2.24 ac New laminate flooring a 24x12 deck, 30X30 metal workshop with hard floor All on 3 lots also a 4th lot with all utilities and pond. Near Norfolk Lake, White River. \$130,000 #125392

Buyer's Purchasing Power

Monthly Mortgage Payment (Principal and Interest)

HOME LOAN AMOUNT

	\$190,000	\$170,000	\$150,000	\$130,000	\$110,000
7.75%	\$1,361	\$1,218	\$1,075	\$931	\$788
7.50%	\$1,329	\$1,189	\$1,049	\$909	\$769
7.25%	\$1,296	\$1,160	\$1,023	\$887	\$750
7.00%	\$1,264	\$1,131	\$998	\$865	\$732
6.75%	\$1,232	\$1,103	\$973	\$843	\$713
6.50%	\$1,201	\$1,075	\$948	\$822	\$695

Principal and interest payments rounded to the nearest dollar. Total monthly payment may vary based on loan specifications such as property taxes, insurance, HOA dues, and other fees. Interest rates used here are informational and for marketing purposes only. Consult your licensed Mortgage Advisor for current rates.

CENTURY 21

LeMac Realty East



(870) 492-7653
Toll Free: 800-238-1341
40 Plaza Way, Suite 180
Mountain Home, Arkansas 72653
Each Office Independently Owned & Operated



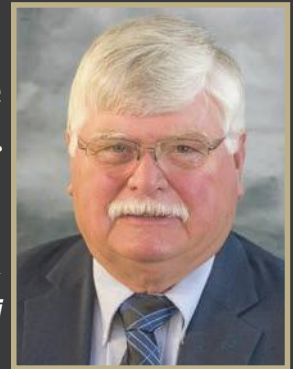
Roger Steele

Executive Broker

Cell: (870) 421-0063

roger@century21lemac.com

Licensed in Arkansas and Missouri



Beautiful show place for cattle or horses, 3466 sq. ft. brick home on 75.26 acres m/l. Show barn (64X100) with stalls for cattle or horses. Detached office (32X34) to entertain guest or buyers. Ranch is located only minutes from Mtn. Home, shopping, and hospital. **\$1,300,000 #124267**

Our Favorite W

Cream Cheese Squares (Nikki Fore)

- 2 - 8 oz cans refrigerated crescent roll dough
- 2 - 8 oz packages cream cheese, softened
- 1 ¼ cups white sugar, divided
- 1 tsp vanilla extract
- ½ cup margarine, melted
- 1 tsp ground cinnamon

Preheat the oven to 350 degrees. Grease a 9x13 baking pan.

Unroll one can of crescent rolls and press dough into the bottom of the prepared pan. Set second can aside.

Mix together cream cheese, 1 cup sugar, and vanilla in a medium bowl until smooth and creamy. Spread over crescent dough layer. Unroll second can of crescent rolls and lay dough on top of cream cheese mixture; do not press down.

Pour melted margarine over the entire pan. Combine remaining ¼ cup sugar and cinnamon in a small bowl; sprinkle on top.

Bake in the preheated oven until top is crisp and golden, 25 to 30 minutes. Once cool, cut into 24 squares.

Quick Creamy Potato Soup (Jewel Pendergrass)

- 8 slices bacon
- 1 cup chopped onion
- 4 cups cubed potatoes
- 2 (10.75 oz) cans condensed cream of chicken soup
- 2 ½ cups milk
- Salt to taste
- Ground black pepper to taste
- 1 tsp dried dill weed

In a large saucepan, cook bacon until crisp. Remove bacon and set aside. Drain all but 3 tbsp bacon fat from the pan.

Brown onions in bacon fat over medium heat.

Add potatoes and enough water to cover. Cover and cook until potatoes are tender, 15 to 20 minutes.

Stir together soup and milk until smooth; add to potato mixture. Heat, but do not boil. Add salt and pepper to taste and stir in dill weed. Crumble bacon; stir in just before serving soup or sprinkle on top to garnish.

Coconut Pecan Cookies (Gary Varallo)

- 1 package yellow cake mix
- 1 package coconut pecan frosting mix
- ½ cup butter or margarine, melted
- 2 eggs

Preheat oven to 350. Grease cookie sheets. Combine all ingredients in large bowl. Stir until moistened. Roll into balls about the size of walnuts. Place

on cookie sheets about 1 ½ inches apart. Bake at 350 for 10 to 15 minutes until light golden brown. Makes about 4 dozen cookies.



French Toast Casserole (Kyle Camp via his wife Jessie)

- 2 cans Cinnamon rolls
- ½ cup butter, melted
- ⅓ cup sugar
- 2 eggs
- ¾ cup heavy whipping cream
- 3 tsp cinnamon
- ¼ tsp nutmeg
- 2 tsp vanilla extract
- ½ cup chopped pecans
- icing from cinnamon rolls packages

1. In a large glass bowl, melt butter with sugar.
2. Beat in eggs, cream, cinnamon, nutmeg and vanilla.
3. Open canned cinnamon rolls, slice into fourths. Place cinnamon roll pieces into the bowl of egg mixture and toss to coat. Then pour the pieces into a greased 9x12 casserole dish and spread out evenly. Pour any leftover egg mixture on top.
4. Sprinkle pecans on top and bake on 350 on a low rack for 30-40 minutes or until brown.
5. Remove from oven. Warm icing for 15 seconds in microwave and pour over casserole.

Winter Recipes

Paula Deen's Corn Casserole (Janetta Abshire)

Ingredients

- 14.75 oz. creamed corn
- 15.25 oz. whole kernel sweet corn, drained
- 8.5 oz. Jiffy corn muffin mix
- 8 oz. sour cream
- 1 stick butter, melted
- 1 cup cheddar cheese, shredded

Instructions

Oven

1. Preheat oven to 350 degrees.
2. In a large bowl, combine all ingredients except for the cheddar cheese. Be sure to drain the whole kernel corn.
3. Pour into a greased 9 x 13 casserole dish or 10-inch cast iron skillet.
4. Bake uncovered for 45 minutes.
5. Top with shredded cheddar. Bake for an additional 10-15 minutes, until the top begins to brown.
6. Let stand for 5 minutes prior to serving. Crock Pot

1. In a large bowl, combine all ingredients except for the cheddar cheese. Be sure to drain the whole kernel corn first. Add it to a lightly greased Crock Pot.
2. Cook on high for 2-3 hours or on low for 4.
3. Add the shredded cheddar during the last 20 minutes of cooking.
4. Ensure the center is firm and set prior to serving.

Notes

Note: The Jiffy mix is not prepared and then added, just the contents of the box itself is added to the mixing bowl.

Chocolate Pecan Pie (Hannah Shults)

Ingredients

- 1/2 cup butter melted
- 1 cup corn syrup
- 1 cup sugar
- 1/4 cup cocoa powder
- 1 teaspoon vanilla
- 1/4 teaspoon salt
- 4 eggs
- 1 cup of pecans
- 1 9inch premade piecrust

Directions

1. Preheat oven to 350°
2. In saucepan combine butter, corn syrup, sugar, and cocoa, cook over low heat stirring constantly until dissolved.
3. Add vanilla, salt, and eggs, stir in half cup chopped pecans mix well
4. Pour mixture into piecrust shell, then top with the other half cup of pecans, bake 55 minutes, let cool to set up, then serve.

Honey Glazed Ham (Beth Maslak)

Ingredients

- 5 pound ham shank, pre-cooked
- 1/4 cup whole cloves*
- 1/4 cup brown sugar
- 2 cups honey
- 2/3 cup butter

Instructions

1. Preheat oven to 325°F.
2. Score ham, and stud with the whole cloves. Place ham in foil lined pan.
3. In a medium saucepan, heat the brown sugar, honey, and butter. Keep glaze warm while baking the ham. (You can add more honey if needed.)
4. Carefully brush glaze over ham that has been studded with cloves, and then create a foil tent for the ham.
5. Bake for 1 hour and 15 minutes, basting the ham every 10 to 15 minutes with the honey glaze. (Be careful to pull the rack out fully so you don't have to reach into a hot oven.) I left one side of the foil less secured so that I could easily pull it back when basting.
6. During the last 4 to 5 minutes of baking, remove the foil and turn on the broiler to caramelize the glaze. The Internal temperature should be 140°F.
7. Remove from the oven and let sit a few minutes before serving.



OZARKSTEAM™ CENTURY 21 LeMac Realty

EnjoyTheOzarks.com



O: 870-425-6356 (Ask For The Ozarks Team) • M:870-656-7888 (Call/Text Anytime)

**Looking For A Home?
We Can Help!
Find Us At
EnjoyTheOzarks.com**



Let's Get Moving Together

OZARKSTEAM™ CENTURY 21 LeMac Realty

EnjoyTheOzarks.com



THE OZARKS TEAM

O: 870-425-6356 (Ask For The Ozarks Team) • M: 870-656-7888 (Call/Text Anytime)



Beautiful Home
4 Bedroom, 3 Bath, Lake Home
3840 sf, All Brick, Large Deck
3 Car Garage, Shop, Move-In Ready
166 ac, Trails, Streams, Spring
Pond, Abundant Wildlife



166 Acres (m/l) w/Lake Frontage



Detached 2 Car Garage And Shop

RARE LAKE FRONT PROPERTY ON LAKE NORFORK. 166 AC (M/L) ESTATE, RIDING/HIKING/ATV TRAILS, SPRING FED STREAM, WATERFALLS, POND, MEADOWS, ABUNDANT WILDLIFE. HORSES PERMITTED. 3840 SF BRICK 4 BR, 3 BA, HOME, OPEN LIVING AREAS, 2 FP, 3 CAR GAR, SHOP, DECK. \$1,750,000 #124884



Magnificent Luxury Home, Friendly Small Town
3 BR, 4 BA, 3290+ sf, Completely Remodeled
Impeccably Decorated, 3 Bedrooms Suites
Private Backyard with Fireplace, Tree House



UNIQUE LUXURY HOME, IMMACULATE, COMPLETELY REMODELED (2015), IMPECCABLE ATTENTION TO DETAIL, MANY SURPRISING, THOUGHTFUL AMENITIES, 3 BR SUITES, 4 BA, 3290+ SF, HUGE ISLAND KITCHEN, PRIVATE YARD, LOCATED IN FRIENDLY, PEACEFUL SALEM, AR. \$799,900 #125044

OZARKSTEAM™ CENTURY 21 LeMac Realty

EnjoyTheOzarks.com



THE OZARKS TEAM

O: 870-425-6356 (Ask For The Ozarks Team) • M: 870-656-7888 (Call/Text Anytime)



Updated, 5 Bedroom 4.5 Bath Ranch
1.63 (m/l) Acre Lot, Fenced Yard, Creek
Large Deck, Oversized Garage + Carport
Immaculate, Move-In Ready



Main Level Living Area
(Open to Kitchen)



Dining Area with French Doors to Deck



Main Level Primary Bedroom
(With Private Full Bath)



Lower Level Family Room
(With bar & fireplace)



Large Deck with Fenced Yard

SPRAWLING 2 LEVEL 5 BR, 4.5 BA RANCH ON 1.67 (M/L) SHADED ACRES JUST NORTH OF TOWN. 4100+ SF LIVING AREA, UPDATED, LARGE FENCED YARD, 3 CAR OVERSIZED GARAGE, 2 STALL CARPORT. LOWER AREA EASILY CONVERTED TO SEPARATE LIVING QUARTERS W/PRIVATE ENTRANCE. \$449,900 #124302



3 BR, 2 BA, 1680+sf Ranch... 83 ac Wooded Lot
New Construction, Appliance Allowance
Low Maintenance, Next To Golf Course



Great Room



Country Kitchen
Allowance For New Appliances



Primary Bedroom Suite



Primary Bedroom Suite Bath



NEW CONSTRUCTION, LOW MAINTENANCE, 3 BR, 2 BA, 1 CAR GAR. 1680+SF, RANCH, LARGE WOODED LOT NEXT TO TWIN LAKES GOLF COURSE. SPLIT BEDROOM PLAN, HUGE GREAT ROOM, COUNTRY KITCHEN, APPLIANCE ALLOWANCE, LUXURY VINYL FLOORS, METAL ROOF & SIDING. \$279,900 #125357

OZARKSTEAM™ CENTURY 21 LeMac Realty

EnjoyTheOzarks.com



THE OZARKS TEAM

O: 870-425-6356 (Ask For The Ozarks Team) • M: 870-656-7888 (Call/Text Anytime)



Private, Updated 2 BR, 2 BA Cabin
50x30 Detached Garage/Shop With Electric
66 Acres (m/l) With Trails, Streams

PRIVATE, SECLUDED 2 BR, 2 BA, UPDATED CABIN + 50X30 GARAGE, NEAR NORFORK LAKE ACCESS, NO RESTRICTIONS. PERFECT VRBO/ AIRBNB, RETIREMENT, VACATION HOME, HOME BUSINESS, PRIVATE YET CONVENIENT LIVING IN THE FRESH COUNTRY AIR. IMMACULATE, MOVE-IN READY. \$370,000 #125234



Immaculate 2 BR 2 BA 1370+ sf Home
40 x 28 Heated Garage/Shop With Office
Move-In Ready, Beautiful 1.1 Acre (m/l) Lot

IMMACULATE 2 BR, 2 BA, 1370+ SF CRAFTSMAN STYLE HOME W/50X40 HEATED GARAGE/SHOP ON BEAUTIFUL, PRIVATE 1.1 ACRE (M/L) LOT NEAR BAKERSFIELD, MO. COVERED PORCH, DECK, BUILT 2002, LOVINGLY MAINTAINED, LIKE NEW CONDITION, MOVE-IN READY, PLENTY OF PARKING. \$229,900 #125241



3 Bedroom, 1.5 Bath, 2,900+ sf Home
With 50 x 36 Heated Shop/Garage
Private 1 ac (m/l) Lot Near Lake Norfolk

SPACIOUS 3 BR 2 LEVEL HOME, 1 (M/L) AC WOODED LOT NEAR LAKE NORFORK, ROBINSON POINT, HENDERSON MARINA, PANTHER BAY. LARGE METAL 50 X 36 INSULATED & HEATED GARAGE / SHOP WITH 4 DEEP BAYS, ELECTRIC, WATER. \$239,900 #125309



2 Bedroom 2 Bath 1500+ sf Townhouse
Great Room, Recessed Ceilings, RV/Boat Storage
Beautiful Devonshire Manor, Near Bull Shoals Lake

LIVE IN COMFORT IN THIS 2 BR, 2 BA 1500+ SF CONDO NEAR BULL SHOALS LAKE, BUILT 2008. SPACIOUS GREAT ROOM COMBINES LIVING AREA, DINING AREA AND CONVENIENT KITCHEN WITH BAR. OVERSIZED PRIMARY BEDROOM. COMMUNITY RV/ BOAT STORAGE. NEAR BULL SHOALS LAKE. \$184,900 #124867



3 Bedroom, 2 Bath, 1300+ sf Ranch
Convenient City Neighborhood
Private, Fenced Backyard

CUTE, ROOMY, 3 BEDROOMS, 2 BATHS, 1300+ SF RANCH, OPEN, SPACIOUS LIVING AREA, LARGE PRIVACY FENCED BACK YARD, CONVENIENT CITY LOCATION. \$179,900 #125062



2 Bedroom 1 Bath 1240+ sf Cabin-style Home
31 x 29 Garage/Shop, Outbuildings, 35 Acres (m/l)

GET BACK TO NATURE WITH THIS OZARK COUNTRY RETREAT ON 35 WOODED ACRES MORE OR LESS. 2 BEDROOM, 1 BATH 1240 SQUARE FOOT, CABIN-STYLE HOME, 31X 29 GARAGE/SHOP, OUTBUILDING, PRIVATE, PEACEFUL LOCATION NEAR NATIONAL FOREST AND BUFFALO RIVER. \$176,950 #123767



2 Bedroom, 1 Bath, 1480 sf Home, 1.80 ac (m/l)
30 x 40 Shop with 220 v, Many Outbuildings with Electric
2 ponds, Fenced Pasture, Barn with Electric, 4 Stalls -
Fruit Trees, Blackberry Bushes, Grape Vines

BACK TO SIMPLE LIVING WITH THIS CUTE MINI-FARM. 2 BEDROOMS, 1 BATH, 1480 SF FARMSTYLE HOME, 30 X 40 METAL SHOP W/220V, 1.8 AC (M/L) WITH 2 PONDS, FENCED PASTURE, 4 STALL BARN W/ELECTRIC, FRUIT TREES, BLACKBERRIES, GRAPES, SEVERAL OUTBUILDINGS. \$159,900 #124926



80 Beautiful Acres Near Mountain Home, Arkansas
Trails, Streams, Small Farms, Wildlife
Many Level and Gently Sloping Building Sites
Water and Electric Available - No Restrictions

80 AC (M/L) BEAUTIFUL, PEACEFUL, PRIVATE, LESS THAN A MILE OUTSIDE MOUNTAIN HOME, AR. NEAR WALMART. BEAUTIFUL WOODED TERRAIN, HARDWOODS, CREEKS, PONDS, CLEARED TRAILS, MANY BUILDING SITES, COUNTY ROAD FRONTAGE, ELECTRIC AND CITY WATER AVAILABLE. \$460,000 #123968



Beautiful Building Lot, Desirable Subdivision
Near Public Access & Ramp
White River
200' 200'
Lot 33 Lot 32

TROUT FISHING DREAM HOME, VACATION HOME, VRBO - 2 LOTS AVAILABLE TOGETHER OR SEPARATELY. EACH LOT HAS OVER 1 ACRE M/L WITH 200' WHITE RIVER FRONTAGE - PERFECT LOCATION IN SNEEDS CREEK LANDING. LEVEL BUILDING SITE, UNDERGROUND ELECTRIC AT THE SITE. \$180,000 #122152



34.10 Acres (m/l), No Restrictions, Paved County Road Frontage,
Several Building Sites, Electric Available, Stream
Near Mountain Home and Lake Norfolk

PRIVATE 34+ ACRES (M/L), NO RESTRICTIONS, PAVED COUNTY ROAD FRONTAGE, SEVERAL EXCELLENT BUILDING SITES, ELECTRIC AVAILABLE, STREAM, MATURE HARDWOODS, NEAR BUSINESS DISTRICT, BAXTER REGIONAL MEDICAL CENTER, MEDICAL OFFICES, LAKE NORFORK PUBLIC ACCESS. \$159,900 #124686



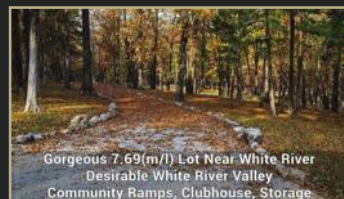
1.27 (m/l) ss Riverfront Lot
Private, Cul-de-sac At The End of Upscale Subdivision
Level Building Site Overlooking White River

ONE OF THE FEW REMAINING RIVERFRONT LOTS IN STONE CREEK IS NOW ON THE MARKET. 1.27 (M/L) AC, 300+ RIVER FRONTAGE ON THE CUL-DE-SAC AT THE END OF STONE CREEK WAY. AN OUT OF THE WAY BUILDING LOT IN THIS PRIVATE, UPSCALE SUBDIVISION ON THE WHITE RIVER. \$137,900 #124300



88 Acre (m/l) LEVEL BUILDING LOT ON WHITE RIVER
REAR PORCH, SLOPED DRIVE, LAKE ACCESS

LEVEL RIVER BUILDING LOT - 120' WHITE RIVER FRONTAGE, UNDERGROUND UTILITIES - UPSCALE SUBDIVISION - BUILDING NOW OR PLANNING FOR THE FUTURE, THE LOCATION COULD NOT BE BETTER. THIS 0.88 ACRE (M/L) RIVER-FRONT LOT LOCATED ON THE WORLD-FAMOUS WHITE RIVER. \$110,000 #123396



Gorgeous 7.69 (m/l) Lot Near White River
Desirable White River Valley
Community Ramps, Clubhouse, Storage

GORGEOUS 7.69 AC (M/L) LOT IN DESIRABLE WHITE RIVER VALLEY. MOSTLY WOODED WITH LEVEL, CLEARED BUILDING SITES, PATHS, WET WEATHER CREEK, AND MORE BEAUTIFUL WINDING DRIVEWAY. NEAR THE MAJESTIC WHITE RIVER. COMMUNITY RAMP, CLUBHOUSE, BOAT STORAGE. \$90,000 #125394



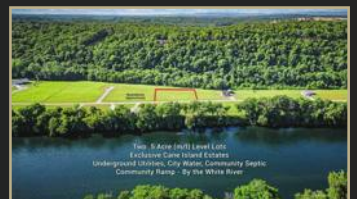
Gorgeous 8.63 ac (m/l) Lot Near White River
Desirable White River Valley
Community Ramps, Clubhouse, Storage

GORGEOUS 8.63 AC (M/L) LOT IN DESIRABLE WHITE RIVER VALLEY. MOSTLY WOODED WITH LEVEL, AND SLOPING BUILDING SITES AND CLEARED PATHS THROUGH WOODS. NEAR THE MAJESTIC WHITE RIVER. COMMUNITY RAMP, CLUBHOUSE, BOAT STORAGE. \$42,900 #125413



2.95 (m/l) Beautiful, Private Building Lot
City Water, Septic Permit Included
Prestigious Neighborhood with Gorgeous Home

PRIVATE 2.95 AC (M/L) BUILDING LOT IN PRESTIGIOUS, UPSCALE NEIGHBORHOOD NEAR TRACY PARK, LAKE NORFORK PUBLIC MARINA AND RAMP. BUILD YOUR LUXURY DREAM HOME WHERE YOU CAN ENJOY THE TWIN LAKES AREA TO THE FULLEST. \$34,800 #124158



Two 0.51 (m/l) Level Lots
Exclusive Canal Estate
Underground Utilities, City Water, Community Septic
Community Ramp - By the White River

TWO 0.51 AC (M/L) LEVEL BUILDING LOTS IN PRESTIGIOUS CANE ISLAND ESTATES WITH 110+ PAVED ROAD FRONTAGE PER LOT, COMMUNITY RAMP ACCESS TO WHITE RIVER, SECURITY GATE, UNDERGROUND UTILITIES, CITY WATER, COMMUNITY SEPTIC, UPSCALE NEIGHBORHOOD. \$30,000 #125238

CENTURY 21[®] Penny Green

LeMac Realty East



(870) 492-7653
Toll Free: 800-238-1341
40 Plaza Way, Suite 180
Mountain Home, Arkansas 72653
Each Office Independently Owned & Operated



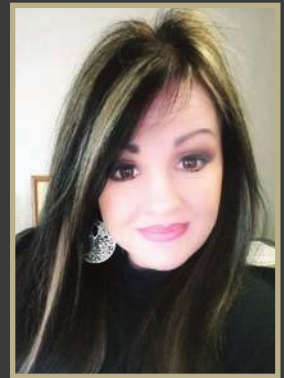
RENE, ABR, SFR, Executive Broker

SMARTER. BOLDER. FASTER.

Cell: (870) 405-0977

pennygreentor@yahoo.com

Licensed in Arkansas and Missouri



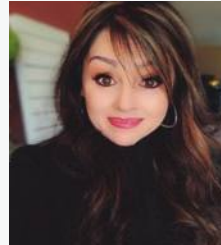
OZARK MOUNTAIN Resort-74.30 acres



7-BR main home, (3) 2 BR Chalets (1) Honeymoon Chalet

Brick Lodge w/(2) 1 BR and (2) 2 BR apartments + office, party pavilion, playground, 16 RV sites w/hooks.

Fully furnished lodging with room for expansion joining the Corp line of Lake Norfork. #125390 \$675,000



PENNY GREEN

CENTURY 21 LEMAC REALTY EAST
40 PLAZA WAY, STE 180
MTN HOME, AR 72653
870-405-0977 CELL
870-492-7653 OFFICE



CENTURY 21 Penny Green

LeMac Realty East



(870) 492-7653
Toll Free: 800-238-1341
40 Plaza Way, Suite 180
Mountain Home, Arkansas 72653
Each Office Independently Owned & Operated



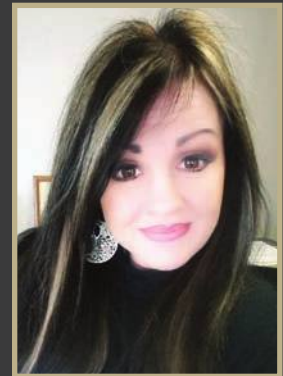
RENE, ABR, SFR, Executive Broker

SMARTER. BOLDER. FASTER.

Cell: (870) 405-0977

pennygreentor@yahoo.com

Licensed in Arkansas and Missouri



Established Salon with busy Hwy 62 frontage. Truly turn-key business with all equipment, furniture, inventory and business name included. Class updates to the interior from top to bottom, quality items, new roof, new front deck entry. **\$365,000 #124257**



Highway 62 frontage, prime location, established garage location with 4 bays office area and overhead loft storage. Real Estate only with 4 bedroom 2 bath 1632 square foot home for owner's living quarters or rental income potential. 1.3 miles past Wal-mart and only minutes to Lake Norfolk area. Home is in need of repair and being sold. As is. 9400 daily traffic count goes past business. **\$365,000 #124920/#125048**

CENTURY 21 Penny Green

LeMac Realty East



(870) 492-7653
Toll Free: 800-238-1341
40 Plaza Way, Suite 180
Mountain Home, Arkansas 72653
Each Office Independently Owned & Operated



RENE, ABR, SFR, Executive Broker

SMARTER. BOLDER. FASTER.

Cell: (870) 405-0977

pennygreentor@yahoo.com

Licensed in Arkansas and Missouri



Professional Home Matchmaker



This year, we are blessed to be celebrating 21 years of ownership! Thank you to all of our clients for allowing us to be part of your real estate journey. We are looking forward to serving our community for many years to come.

CENTURY 21.

LeMac Realty

CENTURY 21[®]

LeMac Realty



"Committed to Quality Service"
Each Office Independently Owned & Operated



Marcy Taylor

Cell: (501) 270-5932

marcy@Century21LeMac.com



Move in ready! This updated 3 bedroom, 2 bath, brick and vinyl home offers an open floor plan, covered back deck (12 x 16), and whole house generator. Includes a detached 24 x 24 garage/workshop and attached 3 car garage with an extra deep bay (8 x 29) perfect for your river boat. Close to the famous White River and Bull Shoals Lake. **\$284,500 #125359**

BULL SHOALS

BAKERSFIELD \$229,900



Immaculate 2 BR 2 BA 1370+ sf Home
40 x 28 Heated Garage/Shop With Office
Move-In Ready, Beautiful 1.1 Acre (m/l) Lot

JOHN SCHAUB
Text or Call: (870) 656-7888
CENTURY 21 LeMAC REALTY
(870) 425-6356

2BR / 2.0BA
SF: 1,375
Acres: 1.1
MLS# 125241

BULL SHOALS \$259,900



KENT SMITH
Text or Call: (870) 405-0500
CENTURY 21 LeMAC REALTY
(870) 425-6356

4BR / 2.0BA
SF: 1,344
Acres: 2.47
MLS# 125160

BULL SHOALS \$284,900



DANNY PORTER
Text or Call: (870) 421-7978
CENTURY 21 LeMAC REALTY
(870) 425-6356

3BR / 2.0BA
SF: 1,550
Acres: n/a
MLS# 124663

CLARKRIDGE

CALICO ROCK \$170,000



MICHELE BUFFO
Text or Call: (870) 202-9378
CENTURY 21 LeMAC EAST
(870) 492-7653

3BR / 1.1BA
SF: 1,144
Acres: 1.7
MLS# 125296

CLARKRIDGE \$79,900



CANDY BARNES
Text or Call: (870) 404-8877
CENTURY 21 LeMAC EAST
(870) 492-7653

4BR / 2.0BA
SF: 1,848
Acres: 5.28
MLS# 125028

CLARKRIDGE \$449,900



DANNY PORTER
Text or Call: (870) 421-7978
CENTURY 21 LeMAC REALTY
(870) 425-6356

3BR / 3.0BA
SF: 4,058
Acres: 2.12
MLS# 125057

FLIPPIN

COTTER \$455,000



JEFF DUNN
Text or Call: (870) 405-8111
CENTURY 21 LeMAC REALTY
(870) 425-6356

4BR / 2.1BA
SF: 4,041
Acres: 2.5
MLS# 125105

ELIZABETH \$139,999



KELLY HORNE-JOHNSON
Text or Call: (870) 405-9777
CENTURY 21 LeMAC EAST
(870) 492-7653

2BR / 2.0BA
SF: 1,180
Acres: 7.79
MLS# 124444

FLIPPIN \$182,000



PENNY GREEN
Text or Call: (870) 405-0977
CENTURY 21 LeMAC EAST
(870) 492-7653

3BR / 2.0BA
SF: 1,486
Acres: 0.34
MLS# 125058

GASSVILLE

FLIPPIN \$349,000



LINDA ZDORA
Text or Call: (870) 405-0793
CENTURY 21 LeMAC REALTY
(870) 425-6356

3BR / 3.0BA
SF: 3,380
Acres: 8.15
MLS# 124224

GAINESVILLE \$159,900



2 Bedroom, 1 Bath, 1480 sf Home, 1.80 ac (m/l)
30 x 40 Shop with 220 v. Many Outbuildings with Electric
2 ponds, Fenced Pasture, Barn with Electric, 4 Stalls
Fruit Trees, Blackberry Bushes, Grape Vines

JOHN SCHAUB
Text or Call: (870) 656-7888
CENTURY 21 LeMAC REALTY
(870) 425-6356

2BR / 1.0BA
SF: 1,480
Acres: 1.8
MLS# 124926

GASSVILLE \$140,000



PENNY GREEN
Text or Call: (870) 405-0977
CENTURY 21 LeMAC EAST
(870) 492-7653

3BR / 1.0BA
SF: 1,344
Acres: 0.34
MLS# 125321

HIGDEN

GASSVILLE \$149,900



JOHN SCHAUB
Text or Call: (870) 656-7888
CENTURY 21 LeMAC REALTY
(870) 425-6356

2BR / 2.0BA
SF: 1,456
Acres: n/a
MLS# 125207

GASSVILLE \$149,900



JOHN SCHAUB
Text or Call: (870) 656-7888
CENTURY 21 LeMAC REALTY
(870) 425-6356

3BR / 1.0BA
SF: 924
Acres: n/a
MLS# 125208

HIGDEN \$179,500



MARCY TAYLOR
Text or Call: (501) 270-5932
CENTURY 21 LeMAC REALTY
(870) 425-6356

2BR / 1.1BA
SF: 1,232
Acres: 2.6
MLS# 125215

JORDAN \$487,350



177ACRES, POND, SPRING, HWY FRONTAGE
IN JORDAN ARKANSAS

LINDA ZDORA
Text or Call: (870) 405-0793
CENTURY 21 LeMAC REALTY
(870) 425-6356

3BR / 1.0BA
SF: 1,150
Acres: 171
MLS# 124979

JORDAN \$700,000



DANNY PORTER
Text or Call: (870) 421-7978
CENTURY 21 LeMAC REALTY
(870) 425-6356

3BR / 2.1BA
SF: 3,520
Acres: 7.74
MLS# 125301

LAKEVIEW \$184,900



JOHN SCHAUB
Text or Call: (870) 656-7888
CENTURY 21 LeMAC REALTY
(870) 425-6356

2BR / 2.0BA
SF: 1,540
Acres: n/a
MLS# 124867

LAKEVIEW \$284,500



MARCY TAYLOR
Text or Call: (501) 270-5932
CENTURY 21 LeMAC REALTY
(870) 425-6356

3BR / 2.0BA
SF: 1,763
Acres: 1.25
MLS# 125359

MIDWAY \$1,300,000



ROGER STEELE
Text or Call: (870) 421-0063
CENTURY 21 LeMAC EAST
(870) 492-7653

6BR / 3.0BA
SF: 3,466
Acres: 75.26
MLS# 124267

MOUNTAIN HOME \$69,900



JOHN SCHAUB
Text or Call: (870) 656-7888
CENTURY 21 LeMAC REALTY
(870) 425-6356

2BR / 2.0BA
SF: 1,070
Acres: n/a
MLS# 124982

MOUNTAIN HOME \$74,500



PENNY GREEN
Text or Call: (870) 405-0977
CENTURY 21 LeMAC EAST
(870) 492-7653

2BR / 2.0BA
SF: 952
Acres: n/a
MLS# 125229

MOUNTAIN HOME \$120,000



DANNY PORTER
Text or Call: (870) 421-7978
CENTURY 21 LeMAC REALTY
(870) 425-6356

1BR / 0.0BA
SF: n/a
Acres: 0.5
MLS# 125218

MOUNTAIN HOME \$129,500



JEFF DUNN
Text or Call: (870) 405-8111
CENTURY 21 LeMAC REALTY
(870) 425-6356

2BR / 1.0BA
SF: 808
Acres: 0.2
MLS# 125094

MOUNTAIN HOME \$137,900



DALE HARRIS
Text or Call: (870) 421-1028
CENTURY 21 LeMAC REALTY
(870) 425-6356

3BR / 2.0BA
SF: 960
Acres: 2.68
MLS# 123463

MOUNTAIN HOME \$140,000



DANNY PORTER
Text or Call: (870) 421-7978
CENTURY 21 LeMAC REALTY
(870) 425-6356

2BR / 2.0BA
SF: 1,514
Acres: n/a
MLS# 125007

MOUNTAIN HOME \$140,000



PENNY GREEN
Text or Call: (870) 405-0977
CENTURY 21 LeMAC EAST
(870) 492-7653

2BR / 2.0BA
SF: 1,329
Acres: 0.53
MLS# 125403

MOUNTAIN HOME \$149,900



JEFF DUNN
Text or Call: (870) 405-8111
CENTURY 21 LeMAC REALTY
(870) 425-6356

3BR / 1.1BA
SF: 1,715
Acres: 2.74
MLS# 125060

MOUNTAIN HOME \$159,900



LINDA ZDORA
Text or Call: (870) 405-0793
CENTURY 21 LeMAC REALTY
(870) 425-6356

2BR / 1.0BA
SF: 844
Acres: 0.89
MLS# 125283

MOUNTAIN HOME \$178,000



LINDA ZDORA
Text or Call: (870) 405-0793
CENTURY 21 LeMAC REALTY
(870) 425-6356

3BR / 2.0BA
SF: 1,428
Acres: n/a
MLS# 125371

MOUNTAIN HOME \$179,900



JOHN SCHAUB
Text or Call: (870) 656-7888
CENTURY 21 LeMAC REALTY
(870) 425-6356

3BR / 2.0BA
SF: 1,311
Acres: 0.3
MLS# 125062

MOUNTAIN HOME \$182,000



LOREL KOPLIN
Text or Call: (870) 421-7266
CENTURY 21 LeMAC EAST
(870) 492-7653

3BR / 2.0BA
SF: 1,917
Acres: 0.3
MLS# 125362

MOUNTAIN HOME \$224,000



JEWEL PENDERGRASS
Text or Call: (870) 404-6356
CENTURY 21 LeMAC REALTY
(870) 425-6356

3BR / 2.0BA
SF: 1,738
Acres: 1.5
MLS# 124974

MOUNTAIN HOME \$224,900



RON WALLACE
Text or Call: (870) 321-7879
CENTURY 21 LeMAC REALTY
(870) 425-6356

2BR / 2.1BA
SF: 1,874
Acres: 0.45
MLS# 125147

MOUNTAIN HOME \$239,900



3 Bedroom, 1.5 Bath, 2,900+ sf Home
With 50 x 36 Heated Shop/Garage
Private 1 ac (m/l) Lot Near Lake Norfork

JOHN SCHAUB
Text or Call: (870) 656-7888
CENTURY 21 LeMAC REALTY
(870) 425-6356

3BR / 1.1BA
SF: 2,920
Acres: 1
MLS# 125309

MOUNTAIN HOME \$279,900



3 BR, 2 BA, 1680+sf Ranch, .83 ac Wooded Lot
New Construction, Appliance Allowance
Low Maintenance, Next To Golf Course

JOHN SCHAUB
Text or Call: (870) 656-7888
CENTURY 21 LeMAC REALTY
(870) 425-6356

3BR / 2.0BA
SF: 1,689
Acres: 0.83
MLS# 125357

MOUNTAIN HOME \$324,900



KELLY HORNE-JOHNSON
Text or Call: (870) 405-9777
CENTURY 21 LeMAC EAST
(870) 492-7653

3BR / 2.1BA
SF: 2,000
Acres: n/a
MLS# 124549

MOUNTAIN HOME \$324,900



DANNY PORTER
Text or Call: (870) 421-7978
CENTURY 21 LeMAC REALTY
(870) 425-6356

4BR / 3.0BA
SF: 2,691
Acres: 0.32
MLS# 125029

MOUNTAIN HOME \$349,000



PENNY GREEN
Text or Call: (870) 405-0977
CENTURY 21 LeMAC EAST
(870) 492-7653

4BR / 2.0BA
SF: 2,495
Acres: 0.29
MLS# 125178

MOUNTAIN HOME \$365,000



PENNY GREEN
Text or Call: (870) 405-0977
CENTURY 21 LeMAC EAST
(870) 492-7653

4BR / 2.0BA
SF: 1,793
Acres: 0.84
MLS# 125048

MOUNTAIN HOME \$370,000



Private, Updated 2 BR, 2 BA Cabin
50x30 Detached Garage/Shop With Electric
66 Acres (m/l) With Trails, Streams

JOHN SCHAUB
Text or Call: (870) 656-7888
CENTURY 21 LeMAC REALTY
(870) 425-6356

2BR / 2.0BA
SF: 1,110
Acres: 66
MLS# 125234

MOUNTAIN HOME \$449,900



Updated, 5 Bedroom 4.5 Bath Ranch
1.63 (m/l) Acre Lot, Fenced Yard, Creek
Large Deck, Oversized Garage + Carport
Immaculate, Move-In Ready

JOHN SCHAUB
Text or Call: (870) 656-7888
CENTURY 21 LeMAC REALTY
(870) 425-6356

5BR / 4.1BA
SF: 4,179
Acres: 1.63
MLS# 124302

MOUNTAIN HOME \$485,000



Luxury 3 BR, 3 BA, 2000 sf Log Home
4+ Acre Wooded Lot with Community Boat Ramp

JOHN SCHAUB
Text or Call: (870) 656-7888
CENTURY 21 LeMAC REALTY
(870) 425-6356

3BR / 3.0BA
SF: 2,000
Acres: 4.11
MLS# 125292

MOUNTAIN HOME \$599,900



DANNY PORTER
Text or Call: (870) 421-7978
CENTURY 21 LeMAC REALTY
(870) 425-6356

3BR / 2.0BA
SF: 2,080
Acres: 67
MLS# 124785

MOUNTAIN HOME \$699,000



DANNY PORTER
Text or Call: (870) 421-7978
CENTURY 21 LeMAC REALTY
(870) 425-6356

5BR / 3.1BA
SF: 4,038
Acres: 12.26
MLS# 123882

MOUNTAIN HOME \$724,000



DANNY PORTER
Text or Call: (870) 421-7978
CENTURY 21 LeMAC REALTY
(870) 425-6356

5BR / 3.0BA
SF: 4,466
Acres: 5
MLS# 124085

MOUNTAIN HOME \$849,500



ANNA HUDSON
Text or Call: (870) 362-0802
CENTURY 21 LeMAC REALTY
(870) 425-6356

5BR / 3.1BA
SF: 4,674
Acres: 4.26
MLS# 124803

MOUNTAIN HOME \$1,000,000



DANNY PORTER
Text or Call: (870) 421-7978
CENTURY 21 LeMAC REALTY
(870) 425-6356

5BR / 3.1BA
SF: 5,264
Acres: 15
MLS# 124625

MOUNTAIN HOME \$1,700,000



JEWEL PENDERGRASS
Text or Call: (870) 404-6356
CENTURY 21 LeMAC REALTY
(870) 425-6356

2BR / 2.1BA
SF: 2,536
Acres: 19.6
MLS# 122606

MOUNTAIN HOME \$1,750,000



JOHN SCHAUB
Text or Call: (870) 656-7888
CENTURY 21 LeMAC REALTY
(870) 425-6356

4BR / 3.0BA
SF: 3,840
Acres: 166
MLS# 124884

MOUNTAIN HOME \$2,250,000



KELLY HORNE-JOHNSON
Text or Call: (870) 405-9777
CENTURY 21 LeMAC EAST
(870) 492-7653

4BR / 5.1BA
SF: 7,162
Acres: 1.02
MLS# 122709

NORFORK \$185,900



JEFF DUNN
Text or Call: (870) 405-8111
CENTURY 21 LeMAC REALTY
(870) 425-6356

3BR / 2.0BA
SF: 1,465
Acres: 2.2
MLS# 125139

NORFORK \$449,000



CANDY BARNES
Text or Call: (870) 404-8877
CENTURY 21 LeMAC EAST
(870) 492-7653

3BR / 3.0BA
SF: 2,650
Acres: n/a
MLS# 125192

PINEVILLE \$185,000



LINDA ZDORA
Text or Call: (870) 405-0793
CENTURY 21 LeMAC REALTY
(870) 425-6356

2BR / 1.0BA
SF: 856
Acres: 3
MLS# 125127

SALEM \$799,900



Magnificent Luxury Home, Friendly Small Town
3 BR, 4 BA, 3290+ sf. Completely Remodeled
Impeccably Decorated, 3 Bedrooms Suites
Private Backyard with Fireplace, Tree House

JOHN SCHAUB
Text or Call: (870) 656-7888
CENTURY 21 LeMAC REALTY
(870) 425-6356

3BR / 4.0BA
SF: 3,292
Acres: 0.33
MLS# 125044

SALESVILLE \$130,000



RON WALLACE
Text or Call: (870) 321-7879
CENTURY 21 LeMAC REALTY
(870) 425-6356

2BR / 2.0BA
SF: 1,128
Acres: 2.24
MLS# 125392

YELLVILLE \$125,000



LINDA ZDORA
Text or Call: (870) 405-0793
CENTURY 21 LeMAC REALTY
(870) 425-6356

1BR / 0.0BA
SF: 192
Acres: 2.5
MLS# 124215

YELLVILLE \$176,950



JOHN SCHAUB
Text or Call: (870) 656-7888
CENTURY 21 LeMAC REALTY
(870) 425-6356

2BR / 1.0BA
SF: 1,241
Acres: 35
MLS# 123767

MOUNTAIN HOME

PINEVILLE

YELLVILLE



GAMALIEL

CALICO ROCK \$299,500



LINDA ZDORA
Text or Call: (870) 405-0793
CENTURY 21 LeMAC REALTY
(870) 425-6356

Commercial
SF: 4,756
Acres: 0.71
MLS# 124363

FLIPPIN \$199,000



LINDA ZDORA
Text or Call: (870) 405-0793
CENTURY 21 LeMAC REALTY
(870) 425-6356

Commercial
SF: 2,246
Acres: n/a
MLS# 121342

GAMALIEL \$675,000



LOREL KOPLIN
Text or Call: (870) 421-7266
CENTURY 21 LeMAC EAST
(870) 492-7653

Commercial
SF: 2,570
Acres: 74.3
MLS# 125390

MOUNTAIN HOME

MOUNTAIN HOME \$129,500



JEFF DUNN
Text or Call: (870) 405-8111
CENTURY 21 LeMAC REALTY
(870) 425-6356

Commercial
SF: 1,281
Acres: 0.2
MLS# 125093

MOUNTAIN HOME \$269,000



DANNY PORTER
Text or Call: (870) 421-7978
CENTURY 21 LeMAC REALTY
(870) 425-6356

Commercial
SF: 2,700
Acres: 0.55
MLS# 125323

MOUNTAIN HOME \$299,900



JOHN SCHAUB
Text or Call: (870) 656-7888
CENTURY 21 LeMAC REALTY
(870) 425-6356

Commercial
SF: 3,947
Acres: 0.54
MLS# 124724

MOUNTAIN HOME \$310,000



PENNY GREEN
Text or Call: (870) 405-0977
CENTURY 21 LeMAC EAST
(870) 492-7653

Commercial
SF: 1,729
Acres: n/a
MLS# 125222

MOUNTAIN HOME \$360,000



PENNY GREEN
Text or Call: (870) 405-0977
CENTURY 21 LeMAC EAST
(870) 492-7653

Commercial
SF: 1,729
Acres: 0.5
MLS# 124257

MOUNTAIN HOME \$365,000



PENNY GREEN
Text or Call: (870) 405-0977
CENTURY 21 LeMAC EAST
(870) 492-7653

Commercial
SF: 1,860
Acres: 0.84
MLS# 124920

MOUNTAIN HOME \$1,700,000



JEWEL PENDERGRASS
Text or Call: (870) 404-6356
CENTURY 21 LeMAC REALTY
(870) 425-6356

Commercial
SF: 2,536
Acres: 19.6
MLS# 122607

MOUNTAIN HOME \$1,750,000



DANNY PORTER
Text or Call: (870) 421-7978
CENTURY 21 LeMAC REALTY
(870) 425-6356

Commercial
SF: 5000+
Acres: 3.8
MLS# 124594

MOUNTAIN HOME \$2,200,000



PENNY GREEN
Text or Call: (870) 405-0977
CENTURY 21 LeMAC EAST
(870) 492-7653

Commercial
SF: n/a
Acres: 4.66
MLS# 125245

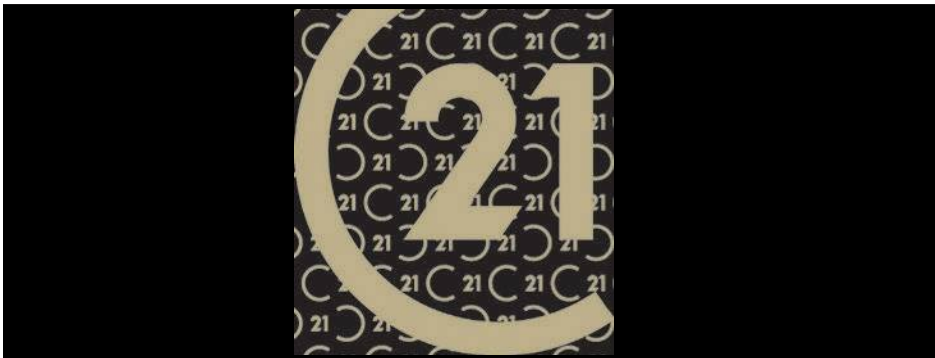
YELVILLE

YELVILLE \$775,000



LINDA ZDORA
Text or Call: (870) 405-0793
CENTURY 21 LeMAC REALTY
(870) 425-6356

Commercial
SF: 7,000
Acres: 2.7
MLS# 123190



CALICO ROCK \$149,500



LINDA ZDORA
 Text or Call: (870) 405-0793
 CENTURY 21 LeMAC REALTY
 (870) 425-6356

Lots & Land
 Acres: 13
 MLS# 124825

CLARKRIDGE \$14,500



KENT SMITH
 Text or Call: (870) 405-0500
 CENTURY 21 LeMAC REALTY
 (870) 425-6356

Lots & Land
 Acres: 2
 MLS# 120832

CLARKRIDGE \$15,500



KENT SMITH
 Text or Call: (870) 405-0500
 CENTURY 21 LeMAC REALTY
 (870) 425-6356

Lots & Land
 Acres: 2
 MLS# 121091

CLARKRIDGE

CLARKRIDGE \$40,500



KENT SMITH
 Text or Call: (870) 405-0500
 CENTURY 21 LeMAC REALTY
 (870) 425-6356

Lots & Land
 Acres: 4.08
 MLS# 120931

COTTER \$22,000



JEFF DUNN
 Text or Call: (870) 405-8111
 CENTURY 21 LeMAC REALTY
 (870) 425-6356

Lots & Land
 Acres: 0.71
 MLS# 124507

COTTER \$85,000



PENNY GREEN
 Text or Call: (870) 405-0977
 CENTURY 21 LeMAC EAST
 (870) 492-7653

Lots & Land
 Acres: 4.2
 MLS# 125185

COTTER

DOLPH \$59,000



JEFF DUNN
 Text or Call: (870) 405-8111
 CENTURY 21 LeMAC REALTY
 (870) 425-6356

Lots & Land
 Acres: 17.5
 MLS# 123695

FLIPPIN \$30,000



JOHN SCHAUB
 Text or Call: (870) 656-7888
 CENTURY 21 LeMAC REALTY
 (870) 425-6356

Lots & Land
 Acres: 0.51
 MLS# 125238

FLIPPIN \$75,000



ANNA HUDSON
 Text or Call: (870) 362-0802
 CENTURY 21 LeMAC REALTY
 (870) 425-6356

Lots & Land
 Acres: 9.07
 MLS# 125298

FLIPPIN

FLIPPIN \$79,000



DANNY PORTER
 Text or Call: (870) 421-7978
 CENTURY 21 LeMAC REALTY
 (870) 425-6356

Lots & Land
 Acres: 13.73
 MLS# 125231

FLIPPIN \$104,900



CANDY BARNES
 Text or Call: (870) 404-8877
 CENTURY 21 LeMAC EAST
 (870) 492-7653

Lots & Land
 Acres: 0.66
 MLS# 124805

GAMALIEL \$35,000



PAM MARTIN
 Text or Call: (870) 404-5970
 CENTURY 21 LeMAC EAST
 (870) 492-7653

Lots & Land
 Acres: 2.06
 MLS# 124949

GAMALIEL

GASSVILLE \$79,500



KENT SMITH
 Text or Call: (870) 405-0500
 CENTURY 21 LeMAC REALTY
 (870) 425-6356

Lots & Land
 Acres: 0.75
 MLS# 105991

GASSVILLE \$89,900



11.79 Acres With Electric, Well and Septic Installed
 Building Site Partially Cleared, Shed
 Convenient Location Near Town, No Restrictions

JOHN SCHAUB
 Text or Call: (870) 656-7888
 CENTURY 21 LeMAC REALTY
 (870) 425-6356

Lots & Land
 Acres: 11.79
 MLS# 124680

JORDAN \$59,900



DON RATZEL
 Text or Call: (870) 404-0038
 CENTURY 21 LeMAC REALTY
 (870) 425-6356

Lots & Land
 Acres: 8.3
 MLS# 125199

JORDAN

MOUNTAIN HOME \$11,900



KELLY HORNE-JOHNSON
 Text or Call: (870) 405-9777
 CENTURY 21 LeMAC EAST
 (870) 492-7653

Lots & Land
 Acres: n/a
 MLS# 124039

MOUNTAIN HOME \$16,000



ROGER STEELE
 Text or Call: (870) 421-0063
 CENTURY 21 LeMAC EAST
 (870) 492-7653

Lots & Land
 Acres: 0.77
 MLS# 120269

MOUNTAIN HOME \$16,500



BRETT LYNCH
 Text or Call: (870) 706-0406
 CENTURY 21 LeMAC EAST
 (870) 492-7653

Lots & Land
 Acres: 0.44
 MLS# 124854

MOUNTAIN HOME \$19,900



KELLY HORNE-JOHNSON
 Text or Call: (870) 405-9777
 CENTURY 21 LeMAC EAST
 (870) 492-7653

Lots & Land
 Acres: n/a
 MLS# 121475

MOUNTAIN HOME \$26,900



KENT SMITH
 Text or Call: (870) 405-0500
 CENTURY 21 LeMAC REALTY
 (870) 425-6356

Lots & Land
 Acres: 0.6
 MLS# 119859

MOUNTAIN HOME \$28,900



PETE LANGAN
 Text or Call: (870) 421-2984
 CENTURY 21 LeMAC REALTY
 (870) 425-6356

Lots & Land
 Acres: n/a
 MLS# 114432

MOUNTAIN HOME \$34,500



KENT SMITH
 Text or Call: (870) 405-0500
 CENTURY 21 LeMAC REALTY
 (870) 425-6356

Lots & Land
 Acres: 3.5
 MLS# 122780

MOUNTAIN HOME \$34,800



JOHN SCHAUB
 Text or Call: (870) 656-7888
 CENTURY 21 LeMAC REALTY
 (870) 425-6356

Lots & Land
 Acres: 2.95
 MLS# 124158

MOUNTAIN HOME \$39,500



KENT SMITH
 Text or Call: (870) 405-0500
 CENTURY 21 LeMAC REALTY
 (870) 425-6356

Lots & Land
 Acres: 7.37
 MLS# 124475

MOUNTAIN HOME \$39,500



KENT SMITH
 Text or Call: (870) 405-0500
 CENTURY 21 LeMAC REALTY
 (870) 425-6356

Lots & Land
 Acres: 0.35
 MLS# 125052

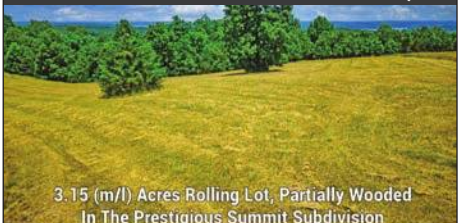
MOUNTAIN HOME \$49,000



PENNY GREEN
 Text or Call: (870) 405-0977
 CENTURY 21 LeMAC EAST
 (870) 492-7653

Lots & Land
 Acres: 3.39
 MLS# 124305

MOUNTAIN HOME \$74,900



3.15 (m/l) Acres Rolling Lot, Partially Wooded
 In The Prestigious Summit Subdivision

JOHN SCHAUB
 Text or Call: (870) 656-7888
 CENTURY 21 LeMAC REALTY
 (870) 425-6356

Lots & Land
 Acres: 3.15
 MLS# 124504

MOUNTAIN HOME \$82,000



LINDA ZDORA
 Text or Call: (870) 405-0793
 CENTURY 21 LeMAC REALTY
 (870) 425-6356

Lots & Land
 Acres: 4.84
 MLS# 125398

MOUNTAIN HOME \$90,000



Gorgeous 7.69(m/l) Lot Near White River
 Desirable White River Valley

JOHN SCHAUB
 Text or Call: (870) 656-7888
 CENTURY 21 LeMAC REALTY
 (870) 425-6356

Lots & Land
 Acres: 7.69
 MLS# 125394

MOUNTAIN HOME \$98,000



PENNY GREEN
 Text or Call: (870) 405-0977
 CENTURY 21 LeMAC EAST
 (870) 492-7653

Lots & Land
 Acres: 1.93
 MLS# 123725

MOUNTAIN HOME \$99,900



PAT ECKMAN
 Text or Call: (870) 421-1545
 CENTURY 21 LeMAC REALTY
 (870) 425-6356
 Lots & Land
 Acres: 10
 MLS# 121944

MOUNTAIN HOME \$105,000



PENNY GREEN
 Text or Call: (870) 405-0977
 CENTURY 21 LeMAC EAST
 (870) 492-7653
 Lots & Land
 Acres: 2.02
 MLS# 124796

MOUNTAIN HOME \$149,900



JEFF DUNN
 Text or Call: (870) 405-8111
 CENTURY 21 LeMAC REALTY
 (870) 425-6356
 Lots & Land
 Acres: 2.74
 MLS# 125061

MOUNTAIN HOME \$159,900



34.10 Acres (m/l), No Restrictions, Paved County Road Frontage, Several Building Sites, Electric Available, Stream Near Mountain Home and Lake Norfork
JOHN SCHAUB
 Text or Call: (870) 656-7888
 CENTURY 21 LeMAC REALTY
 (870) 425-6356
 Lots & Land
 Acres: 34.1
 MLS# 124686

MOUNTAIN HOME \$249,900



PAT ECKMAN
 Text or Call: (870) 421-1545
 CENTURY 21 LeMAC REALTY
 (870) 425-6356
 Lots & Land
 Acres: 24.92
 MLS# 118836

MOUNTAIN HOME \$460,000



80 Beautiful Acres Near Mountain Home, Arkansas Trails, Streams, Small Ponds, Wildlife, Many Level and Gently Sloping Building Sites, Water and Electric Available - No Restrictions
JOHN SCHAUB
 Text or Call: (870) 656-7888
 CENTURY 21 LeMAC REALTY
 (870) 425-6356
 Lots & Land
 Acres: 81.04
 MLS# 123968

MOUNTAIN HOME \$2,200,000



PENNY GREEN
 Text or Call: (870) 405-0977
 CENTURY 21 LeMAC EAST
 (870) 492-7653
 Lots & Land
 Acres: 4.66
 MLS# 125246

MOUNTAIN HOME \$2,300,000



KELLY HORNE-JOHNSON
 Text or Call: (870) 405-9777
 CENTURY 21 LeMAC EAST
 (870) 492-7653
 Lots & Land
 Acres: 46.7
 MLS# 118024

NORFORK \$30,000



KENT SMITH
 Text or Call: (870) 405-0500
 CENTURY 21 LeMAC REALTY
 (870) 425-6356
 Lots & Land
 Acres: 2.87
 MLS# 124437

NORFORK \$39,500



CANDY BARNES
 Text or Call: (870) 404-8877
 CENTURY 21 LeMAC EAST
 (870) 492-7653
 Lots & Land
 Acres: 1.15
 MLS# 125119

NORFORK \$75,000



PENNY GREEN
 Text or Call: (870) 405-0977
 CENTURY 21 LeMAC EAST
 (870) 492-7653
 Lots & Land
 Acres: 10.37
 MLS# 124233

NORFORK \$95,000



JOHN SCHAUB
 Text or Call: (870) 656-7888
 CENTURY 21 LeMAC REALTY
 (870) 425-6356
 Lots & Land
 Acres: 1.1
 MLS# 122150

NORFORK \$95,000



JOHN SCHAUB
 Text or Call: (870) 656-7888
 CENTURY 21 LeMAC REALTY
 (870) 425-6356
 Lots & Land
 Acres: 1.28
 MLS# 122151

NORFORK \$110,000



JOHN SCHAUB
 Text or Call: (870) 656-7888
 CENTURY 21 LeMAC REALTY
 (870) 425-6356
 Lots & Land
 Acres: 0.88
 MLS# 123396

NORFORK \$125,000



PENNY GREEN
 Text or Call: (870) 405-0977
 CENTURY 21 LeMAC EAST
 (870) 492-7653
 Lots & Land
 Acres: 0.81
 MLS# 124011

NORFORK

NORFORK **\$137,900**



1.27 (m/l) ac Riverfront Lot
Private, Cul-de-sac At The End of Upscale Subdivision
Level Building Sites Overlooking White River

JOHN SCHAUB
Text or Call: (870) 656-7888
CENTURY 21 LeMAC REALTY
(870) 425-6356

Lots & Land
Acres: 1.27
MLS# 124300

NORFORK **\$149,500**



5.76 Acre (m/l) Riverfront Lot on White River
Level Building Sites, Sloping Bank
164' River Frontage

JOHN SCHAUB
Text or Call: (870) 656-7888
CENTURY 21 LeMAC REALTY
(870) 425-6356

Lots & Land
Acres: 5.76
MLS# 125166

NORFORK **\$180,000**



White River
200' 200'

Lot 33 Lot 32

JOHN SCHAUB
Text or Call: (870) 656-7888
CENTURY 21 LeMAC REALTY
(870) 425-6356

Lots & Land
Acres: 2.45
MLS# 122152

PEEL

NORFORK **\$199,000**



JEFF DUNN
Text or Call: (870) 405-8111
CENTURY 21 LeMAC REALTY
(870) 425-6356

Lots & Land
Acres: 14.4
MLS# 123418

NORFORK **\$199,000**



JEFF DUNN
Text or Call: (870) 405-8111
CENTURY 21 LeMAC REALTY
(870) 425-6356

Lots & Land
Acres: 7
MLS# 123704

PEEL **\$79,900**



DON RATZEL
Text or Call: (870) 404-0038
CENTURY 21 LeMAC REALTY
(870) 425-6356

Lots & Land
Acres: 11.78
MLS# 125091

YELLVILLE

SALESVILLE **\$14,000**



PAM MARTIN
Text or Call: (870) 404-5970
CENTURY 21 LeMAC EAST
(870) 492-7653

Lots & Land
Acres: n/a
MLS# 123979

YELLVILLE **\$199,500**



JEFF DUNN
Text or Call: (870) 405-8111
CENTURY 21 LeMAC REALTY
(870) 425-6356

Lots & Land
Acres: 30.85
MLS# 123906



Running
COMPS
is our
Cardio



VA LOANS:

Making Homes for the Brave Achievable

VA loans can help make homeownership possible for those who have served our country. Here's some helpful information about this type of home loan.

Who Is Eligible for VA Home Loans?

- Active-Duty Personnel
- Veterans
- Members of the Reserves and National Guard
- Eligible Spouses
- Previous and First-Time Homebuyers

What Can VA Home Loans Be Used for?



Buying a Home or VA-Approved Condo



Building a Home



Making Home Improvements

What Are the Benefits of VA Home Loans?



Options for No Down Payment



Better Terms and Interest Rates



Limited Closing Costs

Homeownership is the American Dream. One way we can honor and thank our veterans is to ensure they have the best information about the benefits of VA home loans.



CENTURY 21[®]

LeMac Realty



Jewel Pendergrass
Broker/Owner



Mickey Pendergrass
REALTOR/Owner



Kyle Camp
Managing Broker



Beth Maslak
Marketing Director



Janetta Abshire
General Manager



Nikki Fiore
Office Manager



Hannah Shults
Support Staff



Gary Varallo
Support Staff



Lea Ann Austin
Property Manager



Candy
Barnes



Michele
Buffo



Donald
Burns



Sheila
Dobbs



Cindi
Floyd



Pat
Eckman



Laura
Frasco



Penny
Green



Dale
Harris



Kelly
Horne-Johnson



Anna
Hudson



Lorel
Koplin



Pete
Langan



Hank
Lawrence



Brett
Lynch



Pam
Martin



Valerie
Metzger



Ozarks Team
John Schaub



Ozarks Team
Heather Hendricks



Ozarks Team
Marcia Taylor



Ozarks Team
Tracy Cox



Ozarks Team
Monique Bedard



Danny
Porter



Don
Ratzel



Toni
Rooker



Kent
Smith



Roger
Steele



Marcy
Taylor



Tri-Rivers Group
Kirby Bailey



Tri-Rivers Group
Jeff Dunn



Tri-Rivers Group
Adrienne Brandt



Tri-Rivers Group
Daryl Young



Ron
Wallace



Z Team
Bob & Linda Zdora



Z Team
April Bentley



Z Team
Darlene Clark



Z Team
Sam McMaster



Z Team
Reese Tubbs

www.Century21LeMac.com

2 locations to serve you better



40 Plaza Way, Ste 180
Mountain Home, AR 72653
TOLL FREE: 800-238-1341
LOCAL: 870-492-7653

1024 Hwy 62B East
Mountain Home, AR 72653
TOLL FREE: 866-377-7220
LOCAL: 870-425-6356

Recognized...Respected...Recommended